

SAMSUNG

Samsung  
**SMART** Home



As Easy As  
Your Kid Goes

## Samsung Smart Home System

**Stylish Design** \_ iF Product Design Award

**Easy Usage** \_ Easy icon & UI that anyone can use

**Enhanced Security** \_ Expanding the secured zone

**Easy Installation** \_ Wall mounting type



SHT-7327

## Samsung Smart Home System

SHT-7327

### Features

- 7" full touch screen and user-friendly GUI
- Easy to use with big buttons
- Compatible to up to 8 security sensors
- Aesthetics and ergonomic in product design (2012 iF product design award)

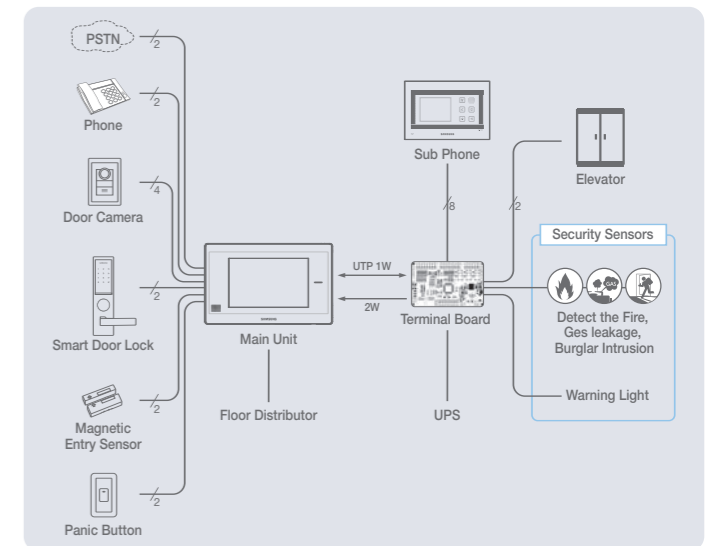
### Functions

- **Security**
  - Home security (burglar, fire, gas leakage, etc.)
  - Directly notice to guard office for emergency security mode
- **Convenience**
  - Door answering & monitoring
  - Telephonic communication (guard office, households)
  - Don't disturb mode
  - Use house phone to talk with the visitor and unlock the door
  - Announcement / Notification
  - Save the visitor's image
  - Elevator call

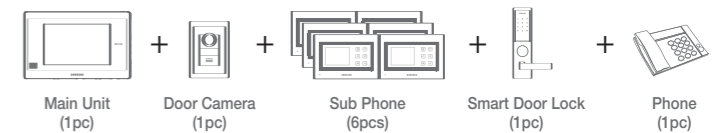
### Specifications

Power	UPS INPUT DC17V~24V
Power Consumption	30W
Display	7" Color TFT LCD& Touch Screen
Size	276.9x185.1x28.5mm (WxHxD)
Weight	950g
Installation	Wall Mounting
Type	Hands-free Type

### System configuration



### System Scalability



### Product Components

Model Code	Description
SHT-7327XM/CN	Main Unit
SHN-T8327XM/CN	Terminal Board
SHT-CN510/EN SHT-CA510/EN	Door Camera
SHT-7104EM/CN	Sub Phone
SHT-5180XL/EN SHT-5181XL/EN	Main Entrance Phone
SHT-552XS/EN	Security Phone
SHT-5700	Main Control Unit

## SEOUL COMMTECH CO., LTD.

www.samsung-homenetwork.com  
sales.ezon@samsung.com

Copyrights (c) 2012 SEOUL COMMTECH CO.,LTD All right reserved.

2012. 2.